

Ruelco



1-800-229-7835
ruelco@ruelco.com

Hydraulic Sand Probe Relay

Model IS03

Hydraulic Sand Probe Relay

Model IS03

FEATURES

- 316 stainless steel construction meets severe service demands (models to N.A.C.E. MR0175 available).
- Will operate with flowline pressures as low as 100 PSI.
- Viton O-rings are utilized for dependability.
- “Red band” on shaft provides visual indication that sand probe relay has operated.
- Knob provided for manually testing the sand probe relay.
- Probes 2" thru 4" in stock (other sizes available upon request).
- Sch. 40, 80, 160, and XXH probe wall sizes are in stock.

GENERAL DESCRIPTION:

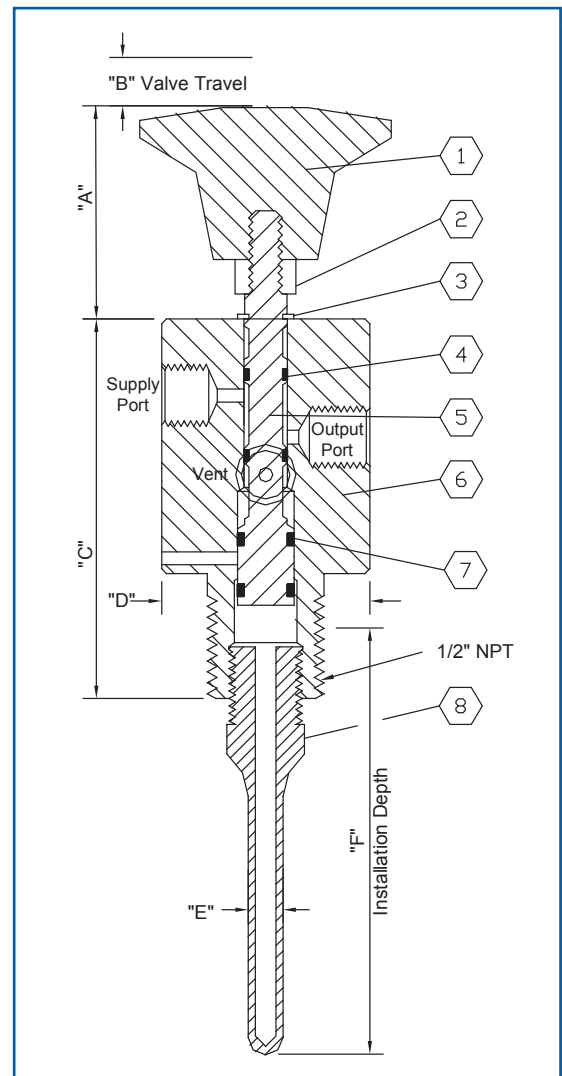
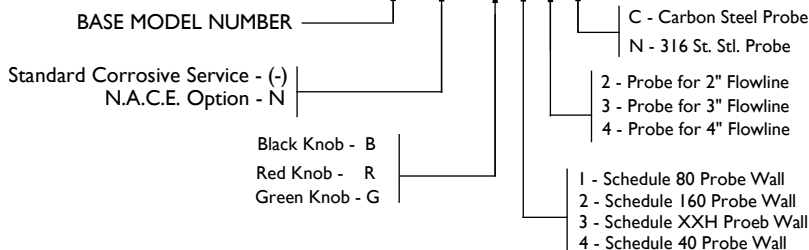
The Ruelco model IS03 sand probe relay uses a thin wall steel probe installed directly in a flowline to detect and indicate that excessive erosion or corrosion has occurred. It utilizes a reliable 3-way valve that will bleed off an instrumentation signal and provide visual indication that the probe has lost pressure integrity. This alerts field personnel that inspection of the flowline and possible repair may be required.

Parts List For Sand Probe Relay

Item	Qty.	Description	Material	Part No.
1	1	Knob	Phenoic	Z0-200-001
2	1	Lock Nut	AISI 316 St. Stl.	T6-08K-0F3
3	1	Snap Ring	5 - 17 St. Stl.	S5-8H00031
4	2	Shaft O-Ring	Viton	V0-008-75T
5	1	Shaft	AISI 316 St. Stl.	IS-002-000
6	1	Valve Body	AISI 316 St. Stl.	IS-003-0H2
7	2	Piston O-Ring	Viton	V0-107-90H
8	1	Sand Probe	See Chart	IS-001-XXX*
9	-	Repair Kit	Items 3, 5 & 8	IS-004-000

* USE LAST THREE (3) DIGITS OF SAND PROBE ORDER CODE SHOWN BELOW

Ordering Code: IS03 X H X X X X



Dimensions Inch (MM)

A	1.40 (35.6)
B	.28 (7.1)
C	3.55 (90.2)
D	1.50 (38.1)
E (Sch. 40 .025 Wall (.64))	.25 (6.4)
E (Sch. 80 .032 Wall (.81))	.25 (6.4)
E (Sch. 160 .050 Wall (1.3))	.25 (6.4)
E (Sch. XXH .125 Wall (3.2))	.50 (12.7)
F (2" Pipe Size)	2.01 (51.1)
F (3" Pipe Size)	2.57 (65.3)
F (4" Pipe Size)	3.08 (78.2)

Specifications P.S.I. (BAR)

Valve Body Max. W.P.	150 (10.3)
Relay Operation Range (base on Probe)	100 (6.7) min. 10,000 (690) max.
Ambient Temperature Range	-20° To 250° F -29° To 122° C
Cv Factor	.34