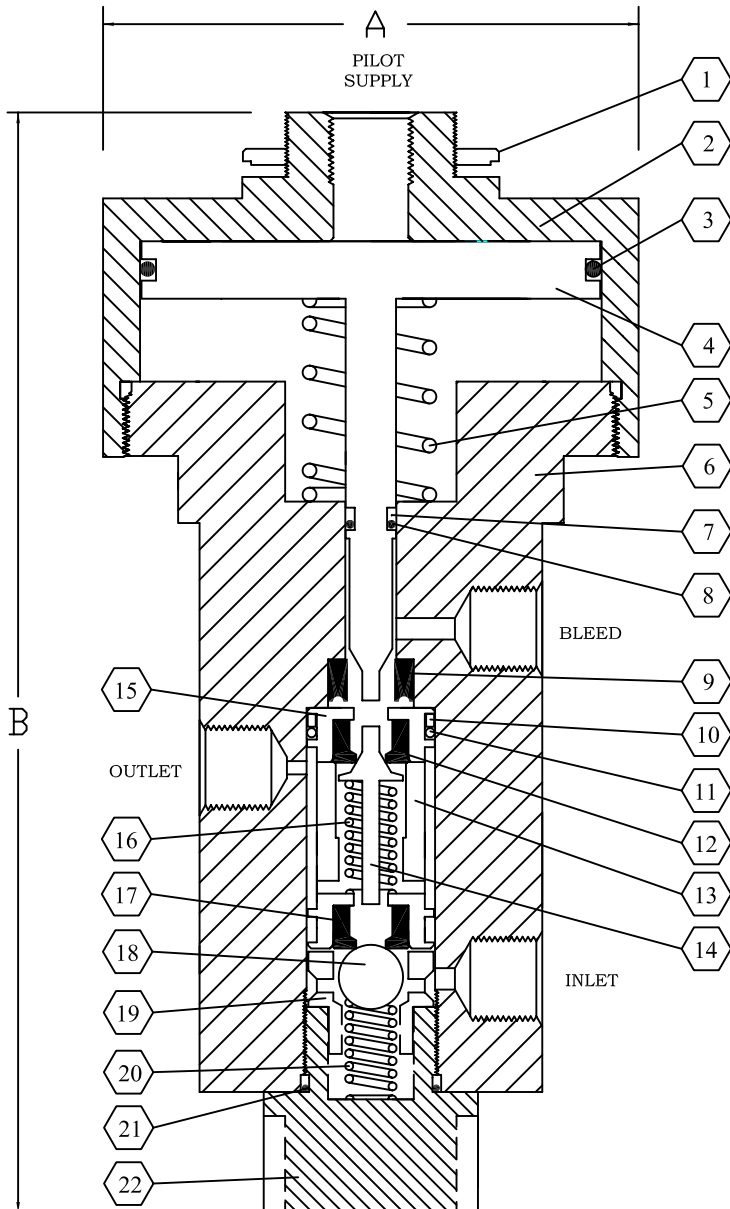




1209 DISTRIBUTORS ROW ■ HARAHAN, LA 70123 U.S.A.

TELEPHONE: (504)340-0055 ■ FAX: (504)340-0056



PARTS LIST FOR INTERFACE VALVE

ITEM	QTY.	DESCRIPTION	MATERIAL	PART NO.
1	1	Panel Mount Nut	Stainless Steel	10-006-000
2	1	Cap	Stainless Steel	81-001-000
3*	1	Piston Seal	Viton	V0-140-75H
4	1	Spool Assembly	Stainless Steel	82-007-000
5	1	Piston Spring	Music Wire	81-014-000
6	1	Body	Stainless Steel	82-001-000
7*	1	Spool Back-Up Seal	Teflon	TF-008-75H
8*	1	Spool Seal	Nitril	N0-008-70H
9*	1	Shaft Seal	Fluoromyte	FM-250-250
10*	2	Sleeve Back-Up Seal	Teflon	TF-016-75H
11*	2	Sleeve Seal	Nitril	N0-016-75H
12*	1	Block Seal	Delrin	82-005-000
13	1	Shut Off Sleeve	Stainless Steel	82-003-000
14	1	Shut Off Piston	Stainless Steel	82-004-000
15	1	Top Sleeve	Stainless Steel	82-002-000
16	1	Shut Off Spring	Stainless Steel	82-008-000
17*	1	Ball Seal	Delrin	81-011-000
18*	1	Ball	Tungsten Carbide	BL-375-10M
19	1	Bottom Sleeve	Stainless Steel	81-005-000
20	1	Inlet Spring	Stainless Steel	81-015-000
21*	1	Bottom Cap Seal	Nitril	N0-017-75H
22	1	Bottom Cap	Stainless Steel	81-004-000
23	-	Repair Kit	* Items	82-009-000

SWITCH SPECIFICATIONS

Valve Type	3-Way
Max. Supply Pressure	200 PSI.
Outlet Orifice Size	.125 IN.
Ambient Temperature Range	-20° TO 250° F -20° TO 122° C
Sensor Type	Piston
Max. Oper. Pressure	10,000 PSI (680 BAR)
Burst Pressure	20,000 PSI. (1380 BAR)

DIMENSIONS

A	3.125 IN (79.4 mm)
B (MAX.)	6.42 IN (163.1 mm)
Panel Mount Hole	1.0 IN (25.4 mm)
Valve Ports	1/4" FNPT
Weight	5.1 LBS (2.31 KG)

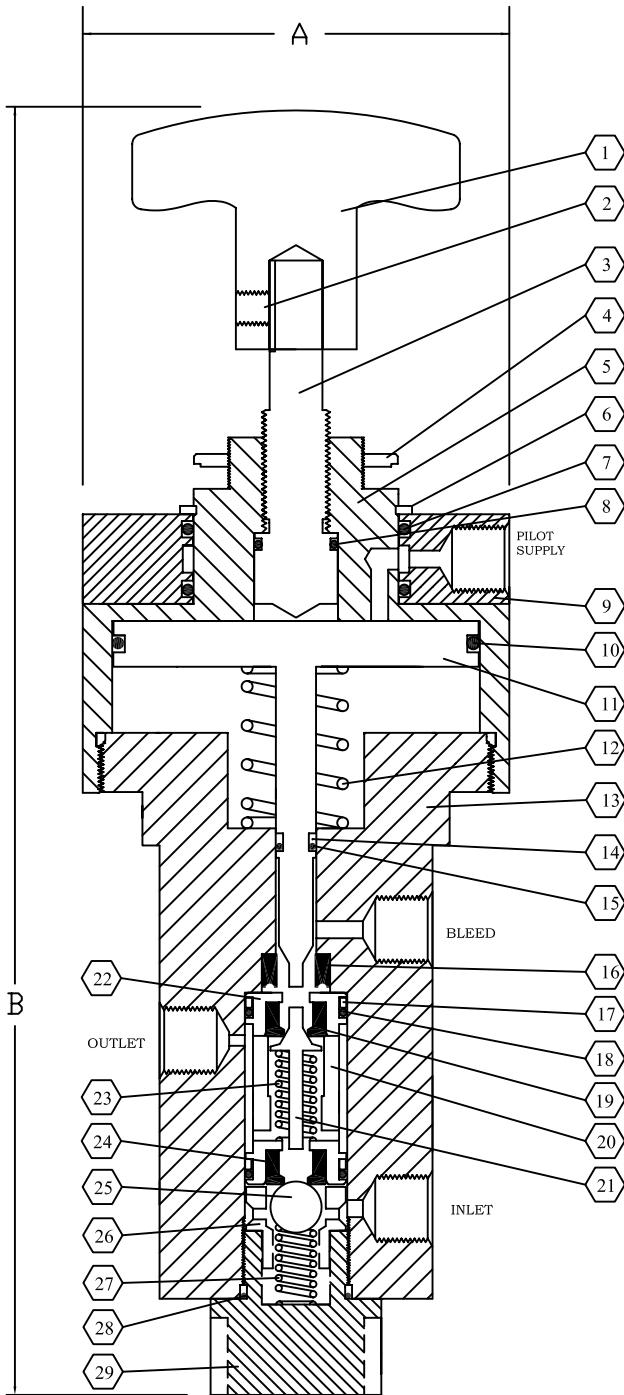
ORDERING CODE: 8200 - 10000

WHILE THIS INFORMATION IS PRESENTED IN GOOD FAITH AND BELIEVED TO BE ACCURATE, RUELCO, INC. DOES NOT GUARANTEE SATISFACTORY RESULTS FROM RELIANCE ON SUCH INFORMATION. NOTHING CONTAINED HEREIN IS TO BE CONSTRUED AS A WARRANTY OR GUARANTEE, EXPRESSED OR IMPLIED, REGARDING THE PERFORMANCE, MERCHANTABILITY, AND FITNESS WITH RESPECT TO THE PRODUCT. RUELCO, INC. RESERVES THE RIGHT, WITHOUT NOTICE, TO ALTER OR IMPROVE THE DESIGNS OR SPECIFICATIONS OF THE PRODUCTS DESCRIBED HEREIN.

Ruelco

1209 DISTRIBUTORS ROW ■ HARAHAN, LA 70123 U.S.A.

TELEPHONE: (504)340-0055 ■ FAX: (504)340-0056



PARTS LIST FOR INTERFACE VALVE

ITEM	QTY.	DESCRIPTION	MATERIAL	PART NO.
1	1	Handle	Technopolymer	81-012-000
2	1	Set Screw	Stainless Steel	T1-08K-0C3
3	1	Override Stem	Stainless Steel	81-010-000
4	1	Panel Mount Nut	Stainless Steel	10-006-000
5	1	Override Cap	Stainless Steel	81-002-000
6	1	Snap Ring	Stainless Steel	SH-150-050
7*	2	Air Ring O-ring	Viton	VO-128-75H
8*	1	Override Seal	Viton	VO-013-75H
9	1	Air Ring	Stainless Steel	81-013-000
10*	1	Piston Seal	Viton	VO-140-75H
11	1	Spool Assembly	Stainless Steel	82-007-000
12	1	Piston Spring	Stainless Steel	81-014-000
13	1	Body	Stainless Steel	82-001-000
14*	1	Spool Back-Up Seal	Teflon	TF-008-75H
15*	1	Spool Seal	Nitril	N0-008-70H
16*	1	Shaft Seal	Fluoromyte	FM-250-250
17*	2	Sleeve Back-Up Seal	Teflon	TF-016-75H
18*	2	Sleeve Seal	Nitril	N0-016-75H
19*	1	Block Seal	Delrin	82-005-000
20	1	Shut Off Sleeve	Stainless Steel	82-003-000
21	1	Shut Off Piston	Stainless Steel	82-004-000
22	1	Top Sleeve	Stainless Steel	82-002-000
23	1	Shut Off Spring	Stainless Steel	82-008-000
24*	1	Ball Seal	Delrin	81-011-000
25*	1	Ball	Tungsten Carbide	BL-375-10M
26	1	Bottom Sleeve	Stainless Steel	81-005-000
27	1	Inlet Spring	Stainless Steel	81-015-000
28*	1	Bottom Cap Seal	Nitril	N0-017-75H
29	1	Bottom Cap	Stainless Steel	81-004-000
30	-	Repair Kit	* Items	82-010-000

SWITCH SPECIFICATIONS

Valve Type	3-Way
Max. Supply Pressure	200 PSI.
Outlet Orifice Size	.125 IN.
Ambient Temperature Range	-20° TO 250° F -20° TO 122° C
Sensor Type	Piston
Max. Oper. Pressure	10,000 PSI (680 BAR)
Burst Pressure	20,000 PSI. (1380 BAR)

DIMENSIONS

A	3.125 IN (79.4 mm)
B (MAX.)	9.25 IN (234.9 mm)
Panel Mount Hole	1.0 IN (25.4 mm)
Valve Ports	1/4" FNPT
Weight	7.15 LBS (3.25 KG)

ORDERING CODE: 8200 - 20000