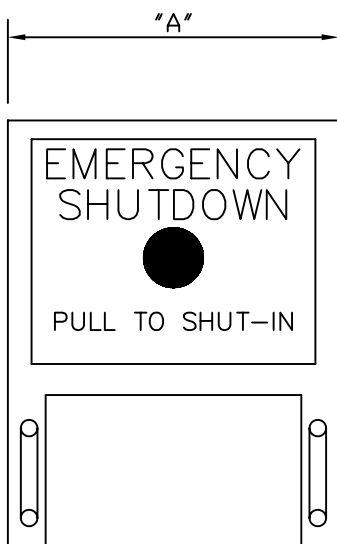




1209 DISTRIBUTORS ROW ■ NEW ORLEANS, LA 70123 U.S.A.  
TELEPHONE: (504)340-0055 ■ FAX: (504)340-0056

## GENERAL DESCRIPTION:

The Ruelco ESD station is a compact, highly visible ESD station. It uses the Ruelco model 1102 pull valve to operate an electric switch assembly. The switch assembly can be SPDT, Ruelco Part No. 38-027-000, or DPDT, Ruelco Part No. 38-028-000. The Ruelco ESD station uses a large red tag to increase visibility. It can be mounted in any desired location by clamping to any 1-1/2" dia. handrail or pipe. When the activation knob is pulled, the electric switch contacts change position until the knob is manually pushed back in.



## FEATURES:

- \* 316 Stainless steel construction (models to N.A.C.E. MRO175 available).
- \* Large Cv factor assures fast system response.
- \* May be used in pneumatic or hydraulic systems.
- \* Red identification tag for high visibility.
- \* Clamps to a 1-1/2" diameter handrail or pipe.
- \* Easily repaired without removing valve from panel.
- \* Threaded vent port allows use of a vent screen.

## OPTIONS:

- \* Available for other pipe sizes upon request.
- \* SPDT or DPDT switch actions.

WHILE THIS INFORMATION IS PRESENTED IN GOOD FAITH AND BELIEVED TO BE ACCURATE, RUELCO, INC. DOES NOT GUARANTEE SATISFACTORY RESULTS FROM RELIANCE ON SUCH INFORMATION. NOTHING CONTAINED HEREIN IS TO BE CONSTRUED AS A WARRANTY OR GUARANTEE, EXPRESSED OR IMPLIED, REGARDING THE PERFORMANCE, MERCHANTABILITY, AND FITNESS WITH RESPECT TO THE PRODUCT. RUELCO, INC. RESERVES THE RIGHT, WITHOUT NOTICE, TO ALTER OR IMPROVE THE DESIGNS OR SPECIFICATIONS OF THE PRODUCTS DESCRIBED HEREIN.

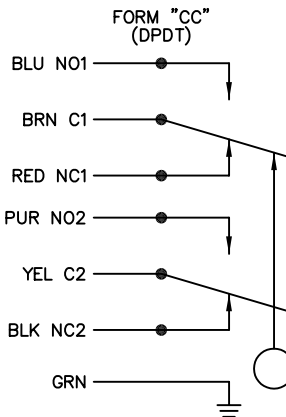
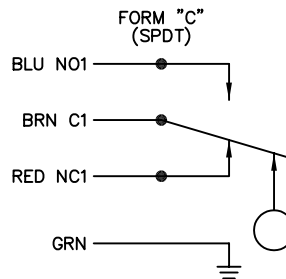
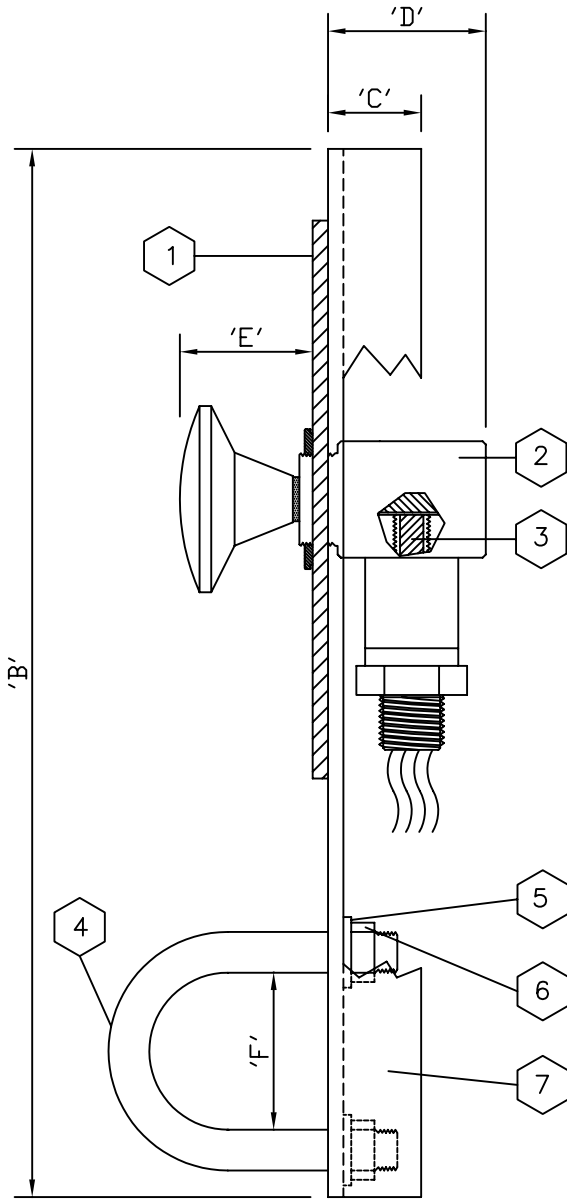
ELECTRIC ESD STATION

MANUAL PULL VALVE

MODEL 7E02

**PARTS LIST FOR ELECTRIC ESD STATION**

ITEM	QTY.	DESCRIPTION	MATERIAL	PART No.
1	1	FACE PLATE	ACRYLIC	70-001-000
2	1	ESD VALVE	-	1102-2410R
3	1	PUSH ROD	DELTRIN	11-006-000
4	2	U-BOLT	316 ST. STL.	TU-0C1-204
5	2	FLAT WASHER	316 ST. STL.	WB-AKO-J43
6	2	HEX NUT	316 ST. STL.	TB-0C1-0A3
7	1	SUPPORT BRACKET	316 ST. STL.	70-002-000
8	-	REPAIR KIT	-	11-005-000
9A	1	ELECTRIC SWITCH SPDT	-	38-018-000
9B	-	ELECTRIC SWITCH DPDT	-	38-019-000



**DIMENSION INCH (MM)**

"A"	8.75 (222.3)
"B"	11.25 (285.8)
"C"	1.00 (25.4)
"D"	1.66 (42.2)
"E" (NORMAL)	1.62 (41.1)
"E" (PULLED FOR ESD)	2.12 (53.8)
"F"	2.06 (52.32)

**SPECIFICATIONS**

VALVE BODY MAX. W.P.	150 PSI 10.3 BARS
AMBIENT TEMP. RANGE	-20 TO 250° F -29 TO 122° C
Cv FACTOR	1.8
SPDT & DPDT MAX. AC/DC VOLTAGE	250 VAC 30 VDC
SPDT & DPDT AMPS ⊙ RATED VOLTAGE	5 AMPS

MODEL 7E02

**ORDERING CODE:** 7E02 X PLX00

BASE MODEL NUMBER

- = STANDARD CORROSIVE SERVICE  
N = N.A.C.E. OPTION

S ----- SPDT SWITCH ASSEMBLY  
D ----- DPDT SWITCH ASSEMBLY