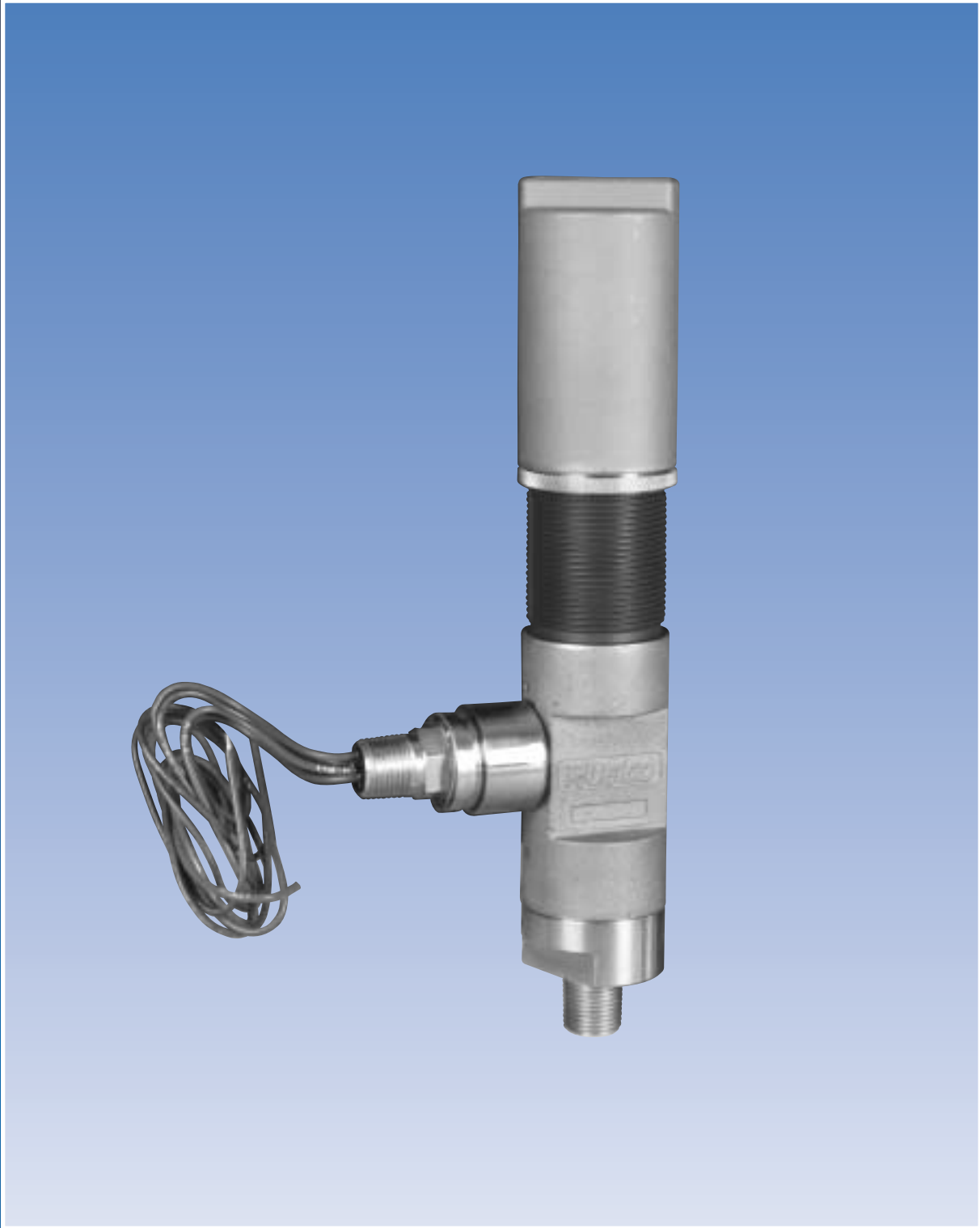


Ruelco



SS-E Electric Pressure Switch Model 4E02

Phone (504) 340-0055
Fax (504) 340-0056

SS-E

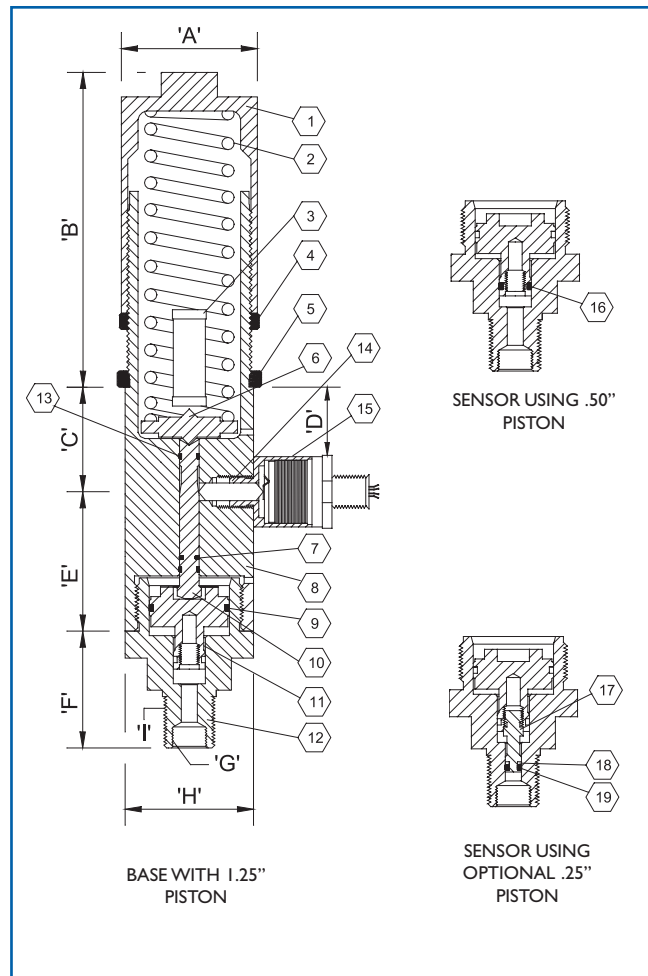
Electric Pressure Switch

FEATURES

- 316 stainless steel construction (models to N.A.C.E. MR0175 available).
- Standard base range 10-10,000 p.s.i. (with 1/4" piston option).
- Operating pressure range from .5 to 20,000 psi.
- Holds constant and accurate set points.
- Designed for 1% plus or minus repeatability on set points.
- Minimum deadband between trip and reset pressure.
- Uses hermetically sealed, snap acting, dry contact switches rated explosion proof. (U.L.™ rated Class I, Div. I, Groups A,B, C, D,).
- Spring may be replaced with sensing pressure present in the sensor.
- Vent above sensing piston prevents high pressure from entering the switch assembly should a piston seal leak develop.
- Optional tamper proof lock-out device available upon request.

GENERAL DESCRIPTION:

The Ruelco 'SS-E' electric pressure switch is operated by pressure acting on a piston opposing an adjustable spring force. It functions as a normally closed or normally open switch, depending on which contacts are used. Pressure applied to the sense port will cause the switch to operate.



Parts List For Pressure Switch Model SS-E

Item	Qty.	Description	Material
1	1	Spring Cap	316 St. Stl.
2A	1	Spring (Blue)	ASTM-401
2B	1	Spring (Red)	ASTM-401
2C	1	Spring (Silver)	ASTM-401
2D	1	Spring (Green)	Inconel
2E	1	Spring (Yellow)	Inconel
2F	1	Spring (Purple)	Inconel
3	1	Parts Tube	Acetate Butyrate
4	1	Lock Ring	316 St. Stl.
5	1	Panel Mount Ring (Optional)	316 St. Stl.
6	1	Spring Plate	316 St. Stl.
7	1	Shaft O-Ring	Viton
8	1	Body	CF-8M St. Stl.
9	1	O-Ring for 1.25" Piston	Viton
10	1	Spool	17-4 PH St. Stl.
11	1	1.25"/.50" Piston	316 St. Stl.
12	1	1.25"/.5"/.25" Sensor Base	316 St. Stl.
13	2	Wear Ring	Delrin
14	1	Push Rod	Delrin
15A	1	SPDT Switch Assembly	316 St. Stl.
15B	1	DPDT Switch Assembly	316 St. Stl.
16	1	O-ring for .5" Piston	Viton
17	1	.25" Piston (Optional)	316 St. Stl.
18	1	Backup for .25" Piston	Teflon
19	1	O-ring for .25" Piston	Viton
20	—	Repair Kit 1.25"/.25" Base	Items 7,9,13,16,18 & 19

Switch Specifications

Set Point Deviation	± 1%
Deadband	5% of Range
Switch Type	SPDT or DPDT
AC Rating	250 Volts @ 5 Amps
DC Rating	30 Volts @ 5 Amps
Ambient Temperature Range	-20 to 167 Deg. F -29 to 75 Deg. C

1.25"/.50"/.25" Switch Sensor Specifications

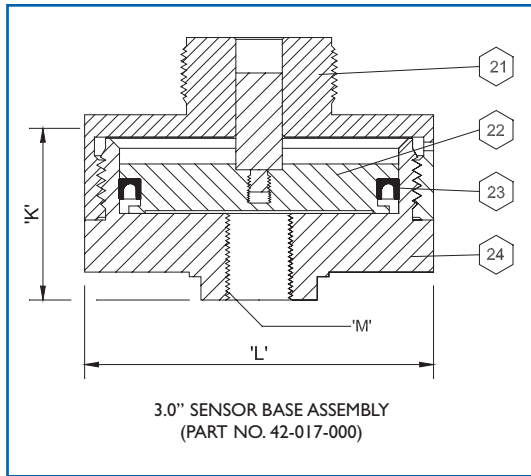
Sensor Type	Piston
Max. Oper. Press.	10,000 PSI (690 BAR)
Burst Pressure	20,000 PSI (1380 BAR)
Temperature Range	-20 to 250 Deg. F -29 to 122 Deg. C

Dimensions Inch (MM)

A	2.12 (53.8)
B (Max)	6.13 (155.7)
C	1.39 (35.3)
D	.90 (22.9)
E	.98 (24.9)
F	1.82 (46.2)
G	1/4" FNPT
H	2.0 (50.8)
I	1/2" MNPT
Panel Mount Hole	1.875 (48.0)
Wire Leads	18" 18 Awg. Stranded
Weight*	6.1 lbs. (2.8 Kg)

* For Switch and 1.25/50/25 Sensor Base.

Spring Codes (COLOR)		Available Ranges - PSI (BAR)														
		.5-20 (.03-1.4)	4-40 (.3-2.75)	10-80 (.7-5.5)	10-115 (.7-7.9)	20-230 (1.4 - 15.8)	50-450 (3.4 - 31)	200-750 (13.8-51.8)	500-1500 (34.5-103.5)	1000-3000 (69-207)	1000-3000 (69-207)	2000-5000 (138-345)	5000-10000 (345-689)	2000-5000 (138-345)	3500-9000 (241-620)	8500-20000 (586-1380)
STANDARD SPRING	INCONEL SPRING															
B (Blue)	G (Green)	X			X		X			X				X		
R (Red)	Y (Yellow)		X			X		X			X				X	
S (Silver)	P (Purple)			X			X		X			X				X
Piston Diameter		3.0"	3.0"	3.0"	1.25"	1.25"	1.25"	.50"	.50"	.50"	.25"	.25"	.25"	.187"	.187"	.187"
Piston Code		0	0	0	1	1	1	2	2	2	3	3	3	4	4	4
		OPTIONAL BASE					OPTIONAL PISTON						OPTIONAL BASE			



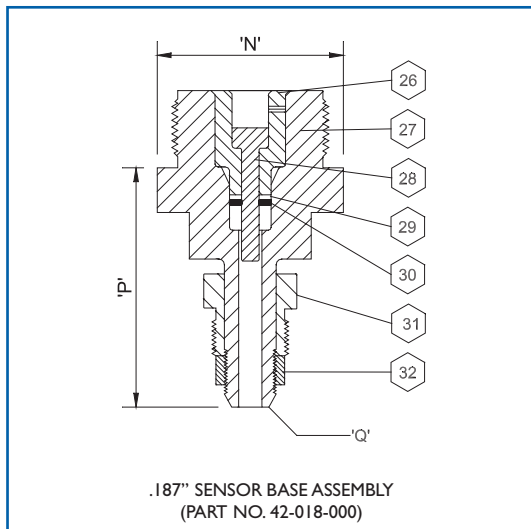
Parts List 3.0" Sensor Base

ITEM	QTY.	DESCRIPTION	MATERIAL
21	1	Upper Housing	17-4 P.H. St. Std.
22	1	Piston Assembly	17-4 P.H. St. Std.
23	1	Seal	Viton
24	1	Lower Housing	17-4 P.H. St. Std.
25	—	Rep. Kit F/ 3.0" Base	Items 7, 13 & 23

Sensor Type	Piston
Max. Oper. Press.	5,000 PSI (345 BAR)
Burst Pressure	10,000 PSI (690 BAR)
Temperature Range	-20 to 250 Deg. F -29 to 122 Deg. C

K	2.0 IN. (50.8 MM)
L	3.75 IN. (95.2 MM)
M	1/2" FNPT
Weight*	8.5 lbs. (3.7 Kg.)

* For Switch and 3.0" Sensor Base



Parts List .187" Sensor Base

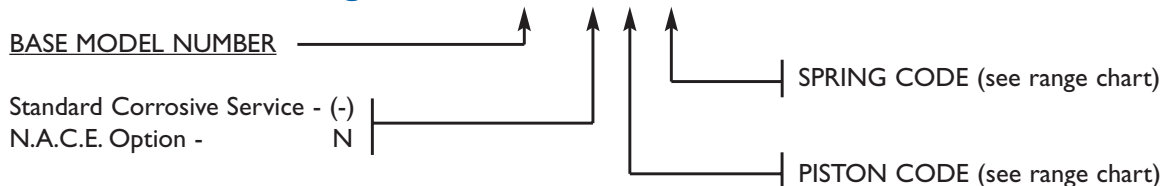
ITEM	QTY.	DESCRIPTION	MATERIAL
26	1	Retainer Sleeve	AISI 316 St. Std.
27	1	.187" Sensor Base	17-4 P.H. St. Std.
28	1	.187" Piston	17-4 P.H. St. Std.
29	1	Back -Up Ring	Teflon
30	1	Polypak Seal	Nitrile
31	1	9/16" Gland Nut	AISI 316 St. Std.
32	1	9/16" Gland Collar	AISI 316 St. Std.
33	—	Repair Kit	Items 7, 13, 29 & 30

Sensor Type	Piston
Max. Oper. Press.	20,000 PSI (1,380 BAR)
Burst Pressure	40,000 PSI (2,760 BAR)
Temperature Range	-20 to 250 Deg. F -29 to 122 Deg. C

N	2.0 IN. (50.8 MM)
P	2.57 IN. (65.3 MM)
Q	9/16" M/P Autoclave
Weight*	5.0 lbs. (2.3 Kg.)

* For Switch and .187" Sensor Base

Ordering Code: 4E02 X X X 0 0 0





SS Series Pressure Switches

SS-1 High Flow

SS-2 Standard

SS-2 High Flow (Pneumatic or Hydraulic)

SS-1 Differential

SS-2 Differential

SS-4 Hydraulic Bleed

SS-E Electric

SS-E Electric Differential