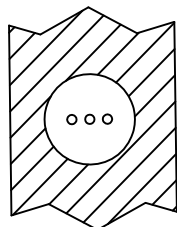
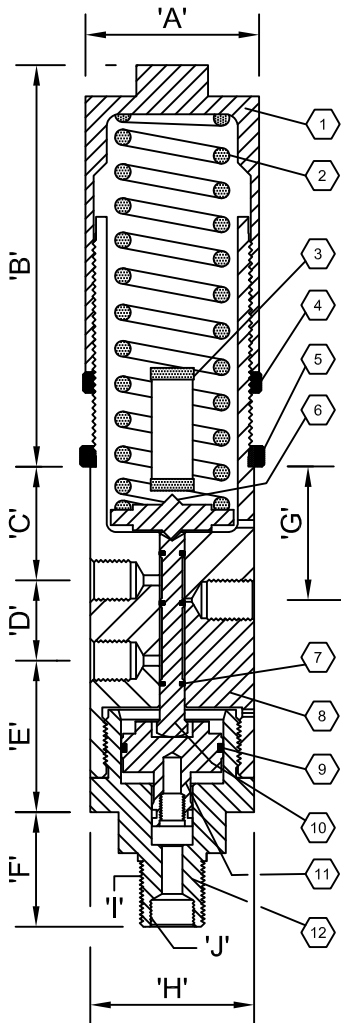


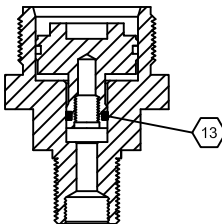


1209 DISTRIBUTORS ROW ■ NEW ORLEANS, LA 70123 U.S.A.
 TELEPHONE: (504)340-0055 ■ FAX: (504)340-0056

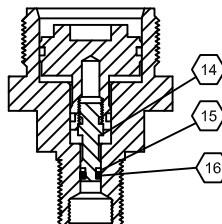
MANUFACTURED UNDER U.S. PATENT NUMBER 4709727



OUTPORT VIEW



SENSOR USING
.50" PISTON



SENSOR USING
OPTIONAL .25" PISTON

PARTS LIST FOR SWITCH AND 1.25"/.5"/.25" SENSOR BASE				
ITEM	QTY.	DESCRIPTION	MATERIAL	PART NO.
1	1	SPRING CAP	STAINLESS STEEL	41-009-0A0
2A	1	SPRING (BLUE)	ASTM-401	41-012-000
2B	1	SPRING (RED)	ASTM-401	41-013-000
2C	1	SPRING (SILVER)	ASTM-401	41-014-000
2D	1	SPRING (GREEN)	INCONEL	41-019-000
2E	1	SPRING (YELLOW)	INCONEL	41-020-000
2F	1	SPRING (PURPLE)	INCONEL	41-021-000
3	1	PARTS TUBE	ACETATE BUTYRATE	42-025-000
4	1	LOCK RING	STAINLESS STEEL	41-015-000
5	1	PNL MOUNT RING (OPTIONAL)	STAINLESS STEEL	41-023-000
6	1	SPRING PLATE	STAINLESS STEEL	41-008-0A0
7	3	SHAFT O-RING	NITRILE	AS-008-75T
8	1	BODY	STAINLESS STEEL	42-H01-000
9	1	O-RING F/1.25" PISTON	NITRILE	AS-024-75T
10	1	SPOOL	STAINLESS STEEL	42-004-OA0
11	1	1.25"/.50" PISTON	STAINLESS STEEL	42-005-001
12	1	1.25"/.50"/.25" SENSOR BASE	STAINLESS STEEL	41-004-OA0
13	1	O-RING F/.5" PISTON	NITRILE	AS-012-75T
14	1	.25" PISTON (OPTIONAL)	STAINLESS STEEL	41-011-OA0
15	1	BACK-UP F/.25" PISTON	TEFLON	TB-006-00C
16	1	O-RING F/.25" PISTON	NITRILE	AS-006-75T
17	-	REPAIR KIT	ITEMS 7,9,13,15,16	41-003-0B0

SWITCH SPECIFICATIONS

VALVE TYPE	3-WAY
SET POINT DEVIATION	± 1%
DEADBAND	5% OF RANGE
MAX. INSTR. PRESSURE	150 PSI
C _v FACTOR	.090
AMBIENT TEMPERATURE RANGE	-20 TO 250° F -29 TO 122° C

1.25"/.50"/.25" SENSOR SPECIFICATIONS

SENSOR TYPE	PISTON
MAX. OPER. PRESSURE	10,000 PSI (690 BAR)
BURST PRESSURE	20,000 PSI (1380 BAR)

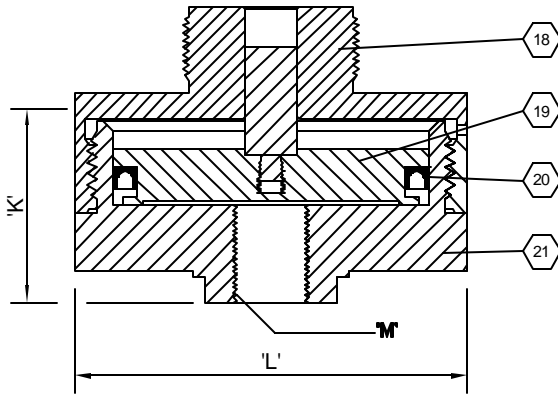
DIMENSIONS

A	2.12 IN (53.8 mm)
B (MAX.)	6.13 IN (155.7 mm)
C	1.39 IN (35.3 mm)
D	.96 IN (24.9 mm)
E	1.43 IN (36.3 mm)
F	1.82 IN (46.2 mm)
G	1.63 IN (41.4 mm)
H	2 IN (50.8 mm)
I	1/2" MNPT
J	1/4" FNPT
PANEL MOUNT HOLE	1.875 IN (48.0 mm)
VALVE PORTS	1/4" FNPT
WEIGHT *	4.9 LBS. (2.3 KG.)

* FOR SWITCH AND 1.25"/.50"/.25" SENSOR BASE

SS-2 HIGH FLOW PNEUMATIC / HYDRAULIC PRESSURE SWITCH - MODEL 4222

SPRING CODES (COLOR)		AVAILABLE RANGES – PSI (BAR)														
STD. SPRING	INCONEL SPRING	.5-20	4-40	10-80	10-115	20-230	50-450	200-750	500-1500	1000-3000	1000-3000	2000-5000	5000-10,000	2000-5000	3500-9000	8500-20,000
		(.03-1.4)	(.3-2.75)	(.7-5.5)	(.7-7.9)	(1.4-15.8)	(3.4-31)	(13.8-51.8)	(34.5-103.5)	(69-207)	(69-207)	(138-345)	(138-689)	(138-345)	(241-620)	(586-1380)
B (BLUE)	G (GREEN)	X			X			X			X			X		
R (RED)	Y (YELLOW)		X			X			X			X			X	
S (SILVER)	P (PURPLE)			X			X			X			X			X
PISTON DIA.		3.0"	3.0"	3.0"	1.25"	1.25"	1.25"	.50"	.50"	.50"	.25"	.25"	.25"	.187"	.187"	.187"
PISTON CODE		0	0	0	1	1	1	2	2	2	3	3	3	4	4	4
OPTIONAL BASE					OPTIONAL PISTON						OPTIONAL BASE					



3.0" SENSOR BASE ASSEMBLY
(PART NO. 42-017-000)

ITEM	QTY.	DESCRIPTION	MATERIAL	PART NO.
18	1	UPPER HOUSING	17-4 PH ST. STL.	42-011-000
19	1	PISTON ASSEMBLY	17-4 PH ST. STL.	42-024-000
20	1	SEAL	NITRILE	VU-334-75T
21	1	LOWER HOUSING	17-4 PH ST. STL.	42-012-000
22	-	REPAIR KIT	ITEMS 7 & 20	42-015-000

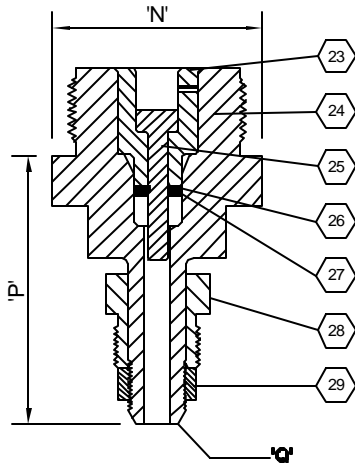
3.0" SENSOR BASE SPECIFICATIONS

SENSOR TYPE	PISTON
MAX. OPER. PRESSURE	5,000 PSI (345 BAR)
BURST PRESSURE	10,000 PSI (690 BAR)
AMBIENT TEMPERATURE RANGE	-20 TO 250° F -29 TO 122° C

3.0" SENSOR BASE DIMENSIONS

K	2.0 IN. (50.8 mm)
L	3.75 IN. (95.2 mm)
M	1/2" FNPT
WEIGHT*	8.5 LBS. (3.7 KG.)

* FOR SWITCH AND 3.0" SENSOR BASE



.187" SENSOR BASE ASSEMBLY
(PART NO. 42-018-000)

ITEM	QTY.	DESCRIPTION	MATERIAL	PART NO.
23	1	RETAINER SLEEVE	AISI 316 ST. STL.	42-021-0A0
24	1	.187" SENSOR BASE	17-4 PH ST. STL.	42-019-0A0
25	1	.187" PISTON	17-4 PH ST. STL.	42-020-000
26	1	BACK-UP RING	TEFLON	42-010-3B0
27	1	SEAL	NITRILE	VP-201-75H
28	1	9/16" GLAND NUT	AISI 316 ST. STL.	42-022-000
29	1	9/16" GLAND COLLAR	AISI 316 ST. STL.	42-023-000
30	-	REPAIR KIT	ITEMS 7, 26 & 27	42-016-000

.187" SENSOR BASE SPECIFICATIONS

SENSOR TYPE	PISTON
MAX. OPER. PRESSURE	20,000 PSI (1380 BAR)
BURST PRESSURE	40,000 PSI (2760 BAR)
AMBIENT TEMPERATURE RANGE	-20 TO 250° F -29 TO 122° C

.187" SENSOR BASE DIMENSIONS

N	2.0 IN. (50.8 mm)
P	2.57 IN. (65.3 mm)
Q	9/16"/M/P AUTOCLAVE
WEIGHT*	5.0 LBS. (2.3 KG.)

* FOR SWITCH AND .187" SENSOR BASE

ORDERING CODE: 4222 X X X 000

BASE MODEL NUMBER

MATERIAL OPTIONS

Standard Corrosive Service ----- (-)

N.A.C.E. Option ----- (N)

SPRING CODE (See Range Chart)

PISTON CODE (See Range Chart)