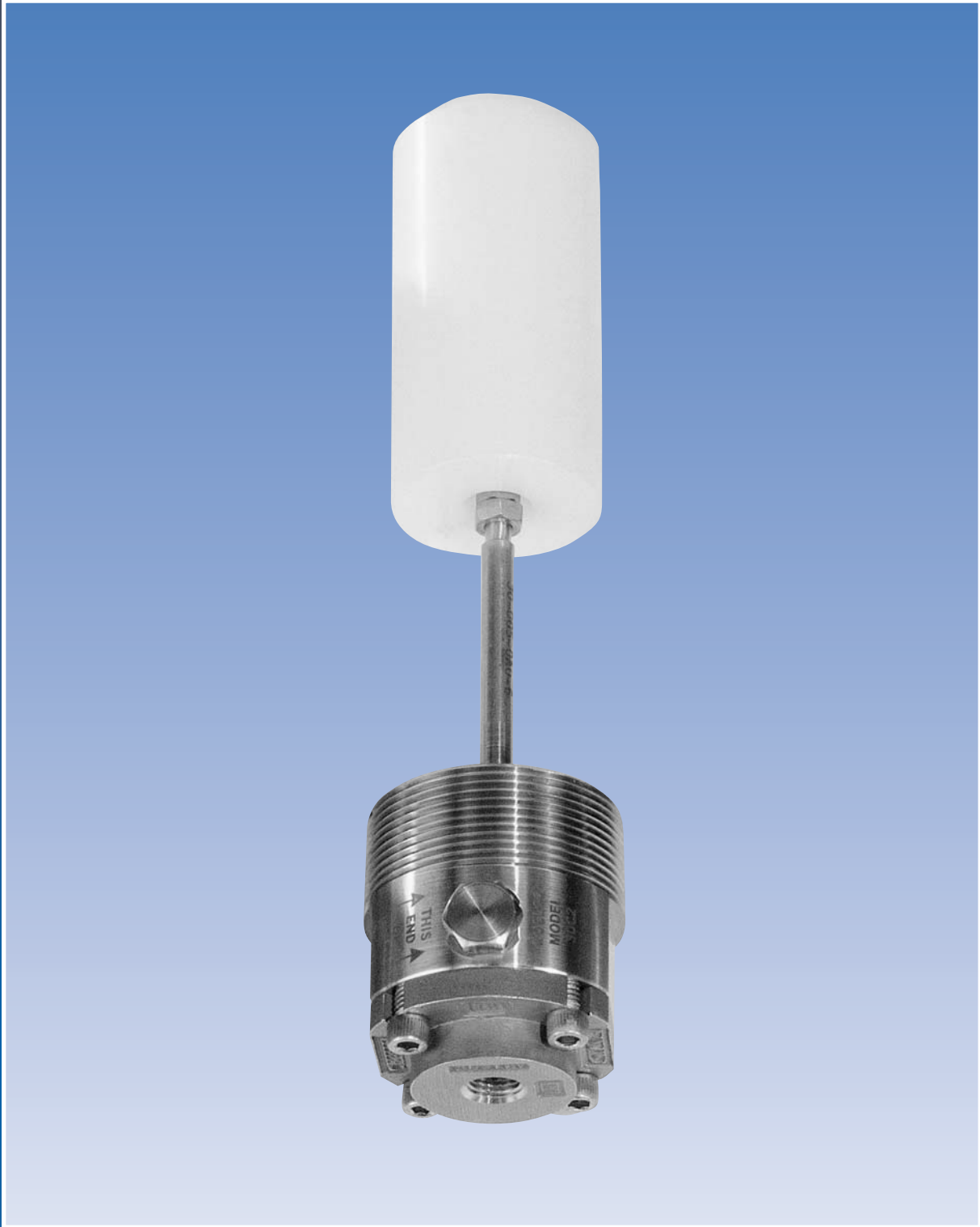


# Ruelco



Pneumatic 2" NPT Level Switch 30C2

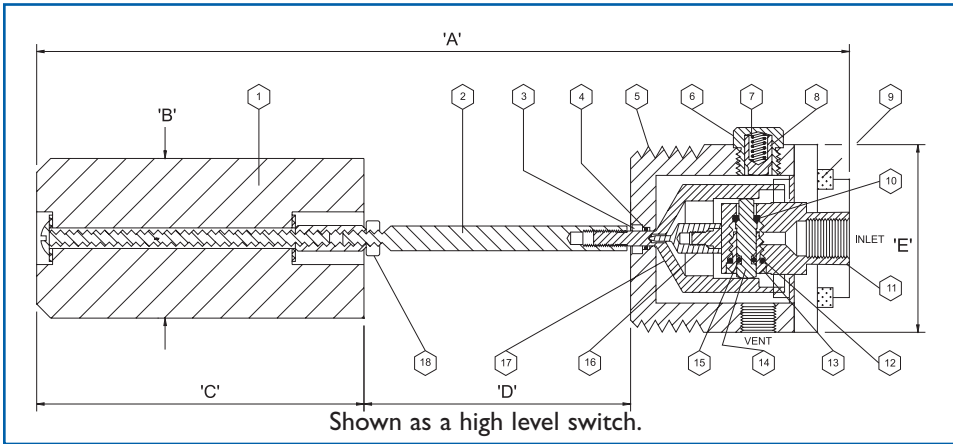
Phone (504) 340-0055  
Fax (504) 340-0056

# Model 30C2 Manufactured Under U.S. Patent # 4838303

## Pneumatic Level Switch

### FEATURES

- 316 stainless steel construction (models to N.A.C.E. MR0175 available).
- Design has no deep cavities or recesses exposed to the process fluids for debris accumulation and is excellent for dirty fluid applications.
- Uses a patented pivot seal mechanism to transmit liquid buoyancy to the valve operation mechanism with the pivot completely isolated from the process fluid.
- Mode of operation ('HI' or 'LO') is easily changed and no re-calibration is required.
- Level adjustments cannot be easily tampered with after installation, making this switch well suited for critical applications.



### GENERAL DESCRIPTION:

The Ruelco Flex Level Model '30C2' is a pneumatic liquid level switch. It incorporates 2" NPT thread giving it substantial mounting flexibility. The sensor operates a pneumatic valve when the liquid in a tank or pressure vessel reaches a predetermined level. The "Flex Level" operates as either a high or low level sensor, the mode of operation is selected simply by rotating the valve body 180 degrees. The standard pneumatic valve is a two-way N.O. or N.C. valve which provides positive and fast system response. When used as a high level sensor, the valve will be N.C. when the liquid level is below the sensor. The valve for a low level sensor is N.O. when the liquid level is below the sensor. Three way 'BLOCK and BLEED' valve operation is possible with the addition of an orifice and a street tee.

### Dimensions Inch (MM)

'A'	10.06 (255.5)
'B'	2.00 (50.8)
'C'	4.10 (104.14)
'D'	3.25 (82.6)
'E'	2.37 (60.2)
PORTS	1/4" NPT
Weight	3.3 Lbs. (1.5 Kg.)

### Parts List For Pneumatic Level Switch 30C2

Item	Qty.	Description	Material
1	1	Displacer Assembly	Polypropylene & 18-8 St. Stl.
2	1	Float Rod	316 St. Stl.
3	1	Body Seal Retainer	316 St. Stl.
4	1	Body Seal	Fluorocarbon
5	1	Body	316 St. Stl.
6	1	Spring Cap	316 St. Stl.
7	1	Spring	Inconel
8	1	Spring Guide	Acetal
9	4	Socket Hd. Cap Screw	316 St. Stl.
10	1	Valve Seat	Fluorocarbon
11	1	Valve Body	316 St. Stl.
12	1	Valve Retainer Seal	Fluorocarbon
13	1	Valve Retainer	316 St. Stl.
14	1	Valve Poppet	316 St. Stl.
15	1	Poppet Seal	Fluorosilicone
16	1	Pivot	304 St. Stl.
17	1	Cone	17-4 PH St. Stl.
18	1	Float rod Nut	316 St. Stl.
19	—	Repair Kit	Items 4,10,12 & 15

### Ordering Code 30C2 X X X X X X

BASE MODEL NUMBER	STANDARD MODEL	To NACE MR0175	POLYPROPYLENE DISPLACER	316 ST. STL. DISPLACER (500 PSI W.P.)	316 ST. STL. DISPLACER (2160 PSI W.P.)	2-WAY VALVE	3-WAY VALVE	HI LEVEL OPERATION	LOW LEVEL OPERATION	STD. ROD WITH HORIZ. DISPLACER	6" ROD WITH HORIZ. DISPLACER	10" ROD WITH HORIZ. DISPLACER	14" ROD WITH HORIZ. DISPLACER	18" ROD WITH HORIZ. DISPLACER	SHORT ROD WITH HANGDOWN DISPLACER	STD. ROD WITH HANGDOWN DISPLACER	HORIZONTAL DISPLACER	1" TO 1' HANGDOWN	1" TO 5' HANGDOWN	1" TO 10' HANGDOWN	1" TO 40' HANGDOWN	40' OR GREATER
30C2 2" NPT Pneumatic	-	N	P	3	6	2	3	H	L	3	6	A	E	J	2	3	0	1	2	3	4	X

### Specifications

Max. Test Pressure PSI (BAR) @ 100 deg. F (37 deg. C)	3240 (223)	Max. W.P. PSI (BAR) @ 100 deg. F (37 deg. C)	2160 (149)	Ambient Temperature Range	-20 to 250 deg. F -29 to 122 deg. C	Max. Process Fluid Temperature	200 deg. F (93 deg. C)	Min. Specific Gravity	0.6	Max. Supply Pressure PSI (BAR)	50 (3.44)	C <sub>v</sub> Factor	.16
--	---------------	---	---------------	---------------------------	--	--------------------------------	---------------------------	-----------------------	-----	--------------------------------	--------------	-----------------------	-----

While this information is presented in good faith and believed to be accurate, Ruelco, Inc. does not guarantee satisfactory results from reliance upon such information. Nothing contained herein is to be construed as a warranty or guarantee, expressed or implied, regarding the performance, merchantability, and fitness with respect to the products. Ruelco, Inc. reserves the right, without notice, to alter or improve the designs or specifications of the products described herein.