

Ruelco



MP-4 Manual Reset Relay

Model 1901

2063 Paxton Street
Harvey, LA 70058
Phone (504) 340-0055
Fax (504) 340-0056

MP-4

Manual Reset Relay

FEATURES

- 316 stainless steel construction (models to N.A.C.E. MR0175 available).
- Easy to close with pilot signal pressures as high as 100 psi.
- Can be repaired without removing relay from system or panel.
- May be used in pneumatic or hydraulic systems.
- 'Lock Closed' design prevents relay from automatically opening.
- Viton and nitrile seals are utilized for dependability.
- Design minimizes malfunctions due to supply system debris.
- Inconel X-750 spring assures dependability in most corrosive environments.

OPTIONS

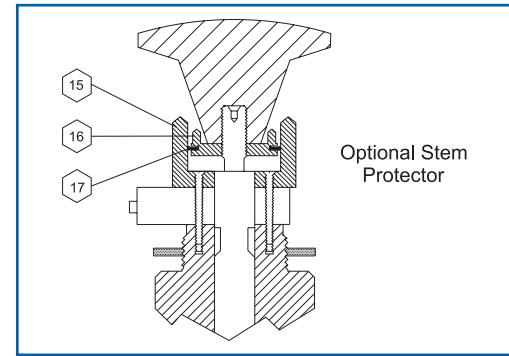
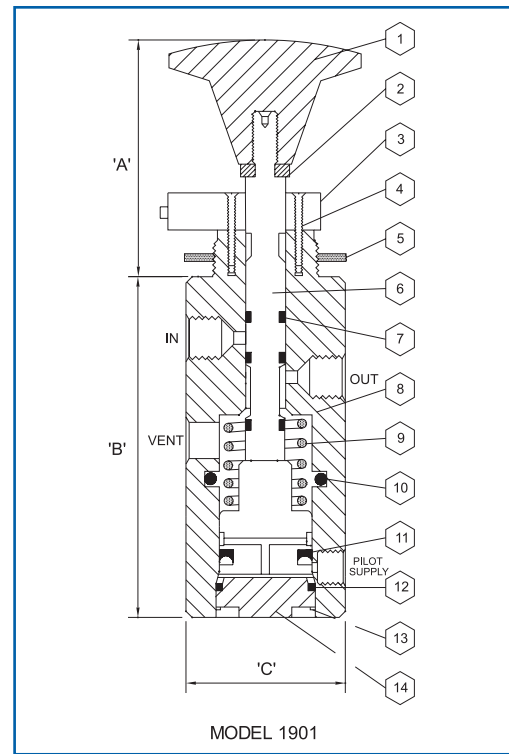
- 30 psi closing spring.
- Stem protector to prevent external debris accumulation on relay shaft.
- Green or red knob colors (black is standard).

GENERAL DESCRIPTION:

The Ruelco 'MP-4' relay is a multi-pressure control valve for production control and safety systems. It functions as a manual reset, pilot operated, normally closed, block and bleed valve. Its simple and compact design makes maintenance and repair easy. The MP-4 does not have to be removed from its control panel or system loop if repair or maintenance is necessary.

Parts List For Manual Relay Model MP-4

Item	Qty.	Description	Material	Part No.
1A	1	Black Knob	Phenolic	ZO-200-001
1B	—	Red Knob	Phenolic	ZO-200-002
1C	—	Green Knob	Phenolic	ZO-200-003
2	1	Lock Nut	316 St. Stl.	T6-08K-0F3
3	1	Detent Assembly	316 St. Stl.	10-005-000
4	2	Screw	316 St. Stl.	T3-632-0G3
5	1	Panel Mount Nut	316 St. Stl.	10-006-000
		Shaft Assembly	316 St. Stl. W/	
6A	1	With Delrin Piston	Delrin	19-005-0A0
6B	—	With St. Stl. Piston	316 St. Stl.	19-005-0A1
7*	3	Shaft Seal	Viton	VO-009-75H
8	1	Body	316 St. Stl.	19-001-0A0
9A	1	20 PSI Spring	Inconel X-750	10-024 -000
9B	—	30 PSI Spring	Inconel X-750	10-017-000
10*	1	Body Seal	Viton	VO-118-75T
11*	1	Piston Seal	Nitrile	NU-209-70H
12*	1	Base Seal	Viton	VO-019-75H
13	1	Retaining Ring	316 St. Stl.	S2-910-093
14A	1	Delrin Base	Delrin	19-004 -000
14B	—	St. Stl. Base	316 St. Stl.	19-004 -001
15	1	Stem Protector Housing	Delrin	10-015-000
16	1	Seal Washer	Delrin	10-016-000
17#	1	Stem Protector Seal	Nitrile	NU-210-70H
18	—	Rep. Kit W/O Protector	* Items	19-006-000
19	—	Rep. Kit W/ Protector	* & # Items	19-007-000



Dimensions Inch (MM)

'A' (Closed / Open)	2.36/2.73 (60/69.3)
'B'	3.25 (82.5)
'C'	1.5 (38.1)
"In" and "Out" Port Size	1/4" NPT
Pilot Port Size	1/8" NPT
Panel Mount Hole	1.0 (25.4)
Max. Panel Thickness	.18 (4.6)
Weight	1.6 Lb. (.72 Kg.)

Specifications P.S.I. (Bar)

Valve Body Max. W.P.	150 (10.3)
Pilot Cap Max. W.P.	125 (8.6)
Ambient Temp. Range	-20 to 250 deg. F -29 to 122 deg. C
Minimum Pilot Signal Pressure To Hold	25 (1.7) with 20 PSI Spring
Relay Open	35 (2.4) with 30 PSI Spring.
C _v Factor	.34

Ordering Code: 1901 X 8 X X X X

BASE MODEL NUMBER

Standard Corrosive Service - (-)
N.A.C.E. Option - N

Black Knob - B
Red Knob - R
Green Knob - G

0 - Without Panel Mount Nut
N - With Panel Mount Nut

0 - Without Stem Protector
P - With Stem Protector
S - With St. Stl. Piston & Base
T - With Options P & S Above

2 - 20 psi Closing Spring
3 - 30 psi Closing Spring